

北京理工大学



Beijing Institute of Technology



Why CHINA ?

为什么选择中国？



China's Diverse Geography...

幅员辽阔





Beautiful Sceneries
风景如画



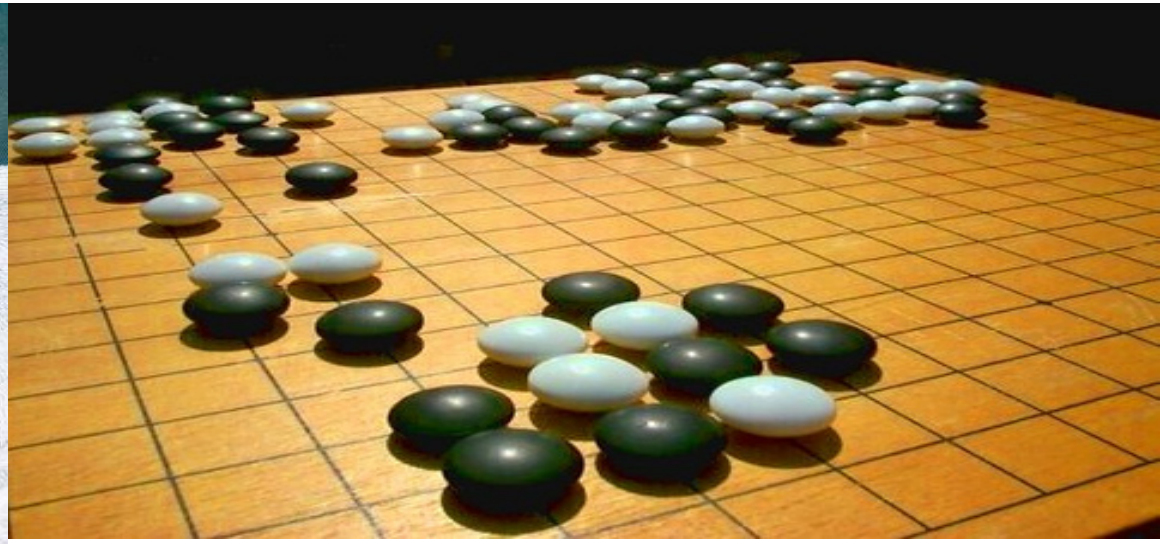


A kingdom of animals and plants
动植物王国

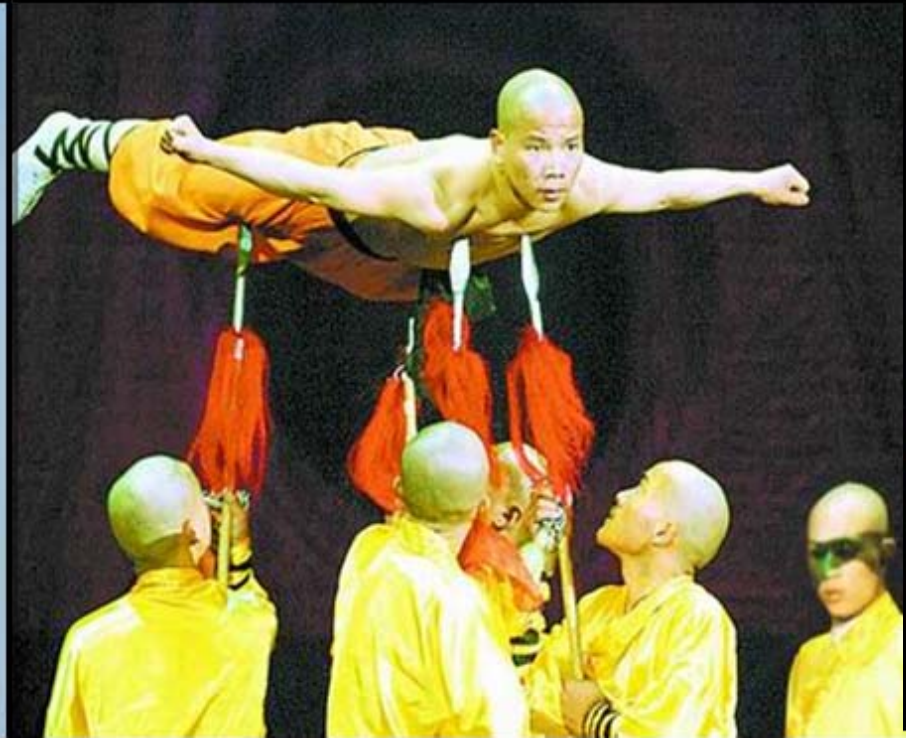


China's Delicate and Traditional...

灿烂的文化







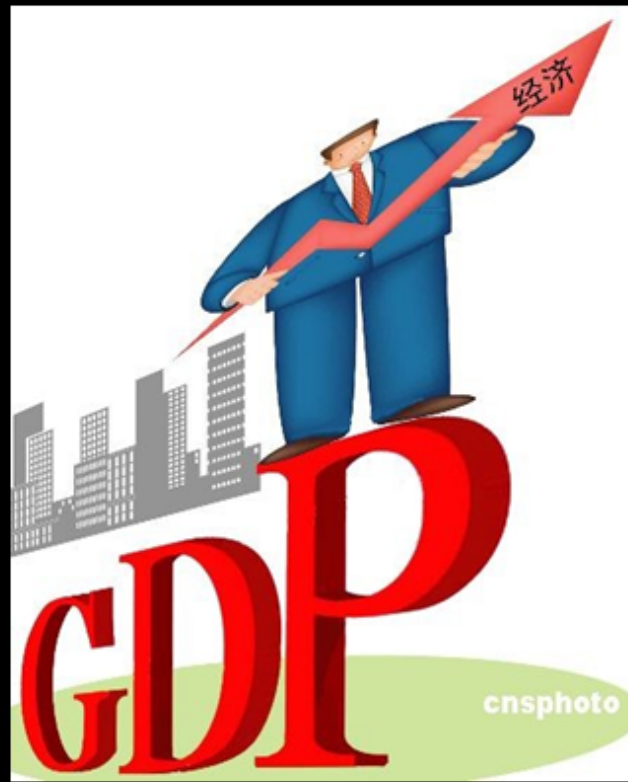
China' Historical 历史悠久



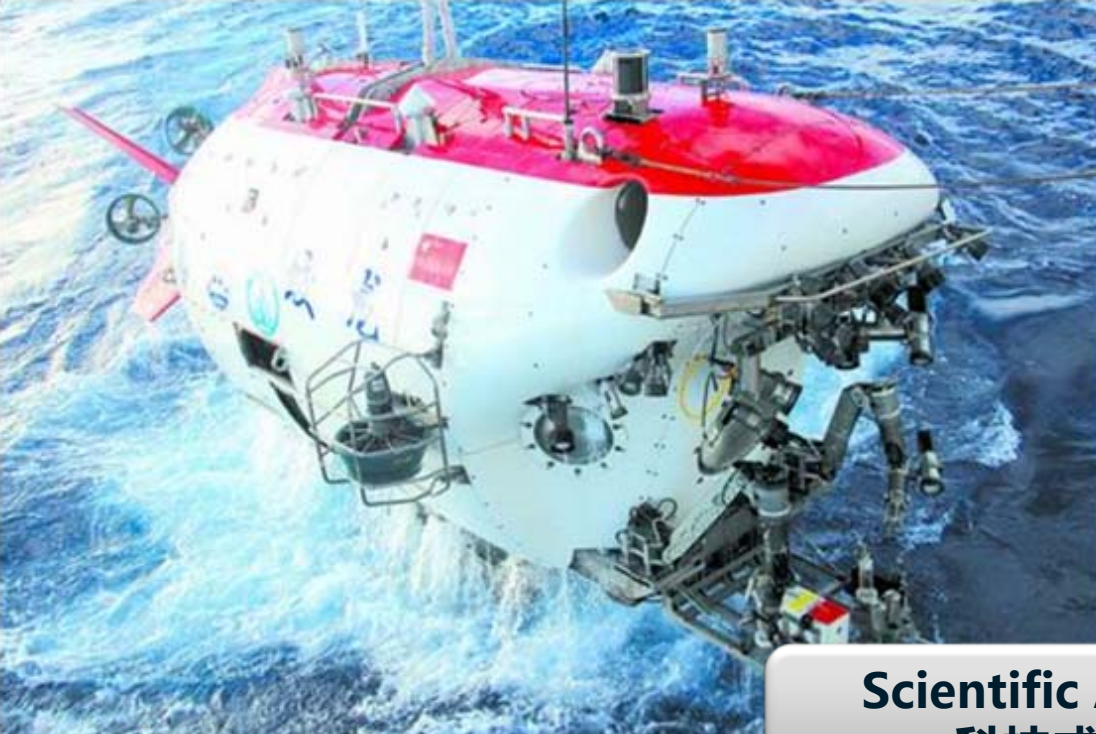


China's FAST and Modern

...
现代化的发展







Scientific Achievements
科技成就令人瞩目



People from all over the world to China! 世界友人欢聚中国!



ຍິນດີຕ້ອນຮັບ
ᄒᆞᆫᄒᆞᆫᄒᆞᆫᄒᆞᆫ

স্বাগত
dialu-alukan

bienvenida

환영

добро пожаловать

حفلة استقبال

chào đón

欢迎

karşılama

powitanie

καλωσόρισμα

bem-vindo

karşılama

Guten Morgen

καλωσόρισμα

vítejte

Welcome to BIT!

მისასალმებელი

ACCUEILLIR DE BIT!

välkommen
ΛΙΓΚΟΛΙΓΚΟ

स्वागत

dobrodošli

selamat datang

benvenuto
ΒΕΛΛΕΝΟΥΤΟ

Exspectata



Why Beijing ?

为什么选择北京？



Beijing is a metropolitan city 北京是一个国际大都市

International entertainment

国际范儿的休闲娱乐



Chinese food

特色中国美食



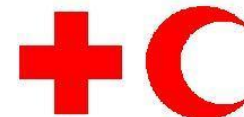
International Business

国际化的商业经济



International Orgnazations

国际机构



Embassies
世界各国大使馆



History of Beijing

北京的历史

City's history:
3000 years

3000年的古城

Capital city:
5 dynasties up to now

5朝古都

Cultural relics and historical sites:
7300

7300余个文化遗迹

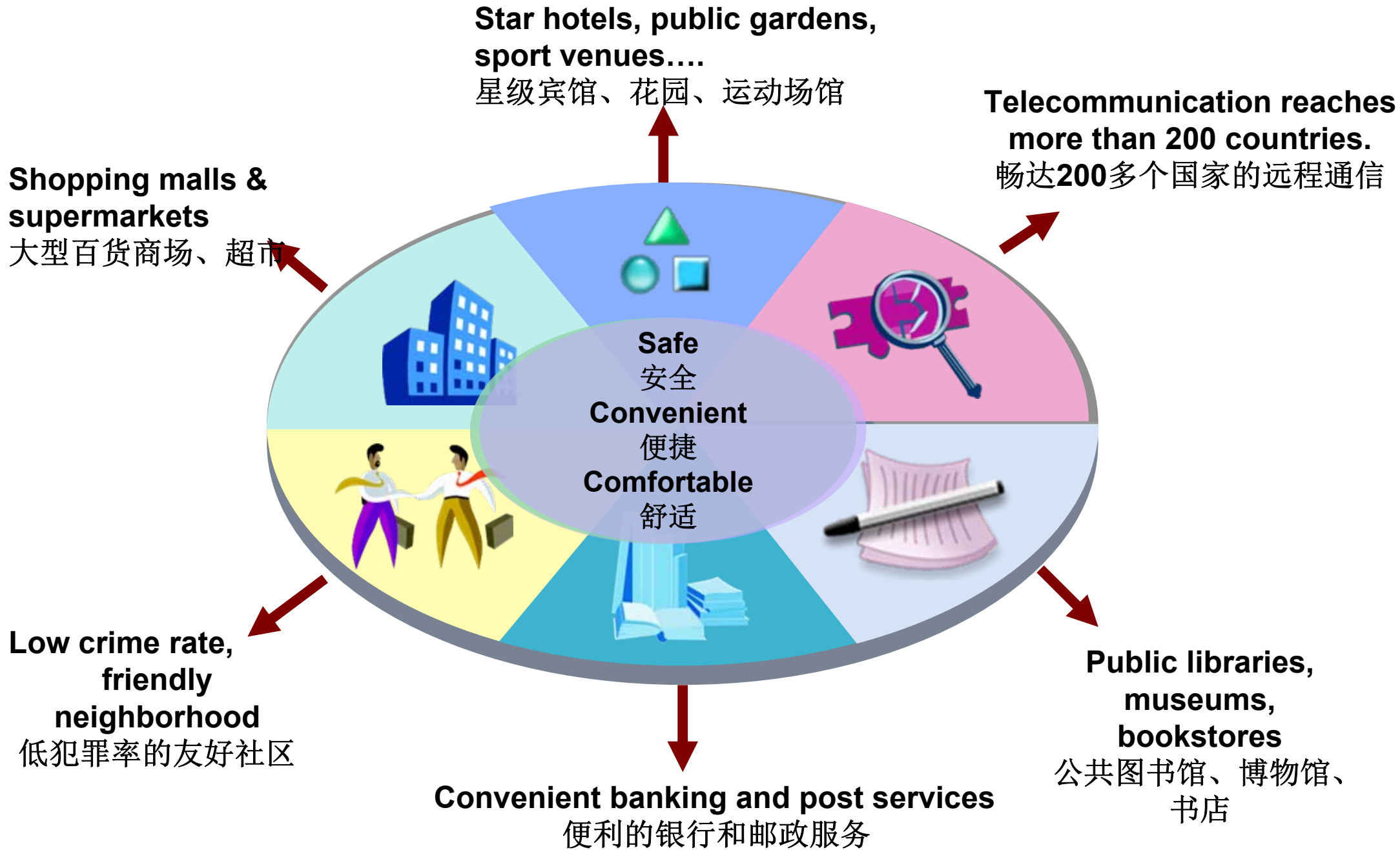
Tourist attractions:
200

200余个旅游胜地

The largest royal palace:
Forbidden City

最大的皇家殿堂-故宫







Arts

瑰丽艺术





Shopping and Fun 购物与休闲



A decent life with modest costs in Beijing.

低消费、高品质、乐活北京



\$0.17/one



\$3.3/one



\$1



\$0.45/lb



\$0.45/lb



\$0.77/lb



\$0.23/lb



\$0.25/lb



\$0.68/lb



\$0.53/lb



\$0.38/lb



\$0.58/lb



\$4-7/one



\$4.5/lb



\$1.37/lb



\$2.5/lb



\$0.33



\$1.4-2/L



\$3



\$4

Eating on Campus:\$4-5/ day 校园用餐：日消费仅4-5美元

Capital of China, center of politics, culture and international exchange.

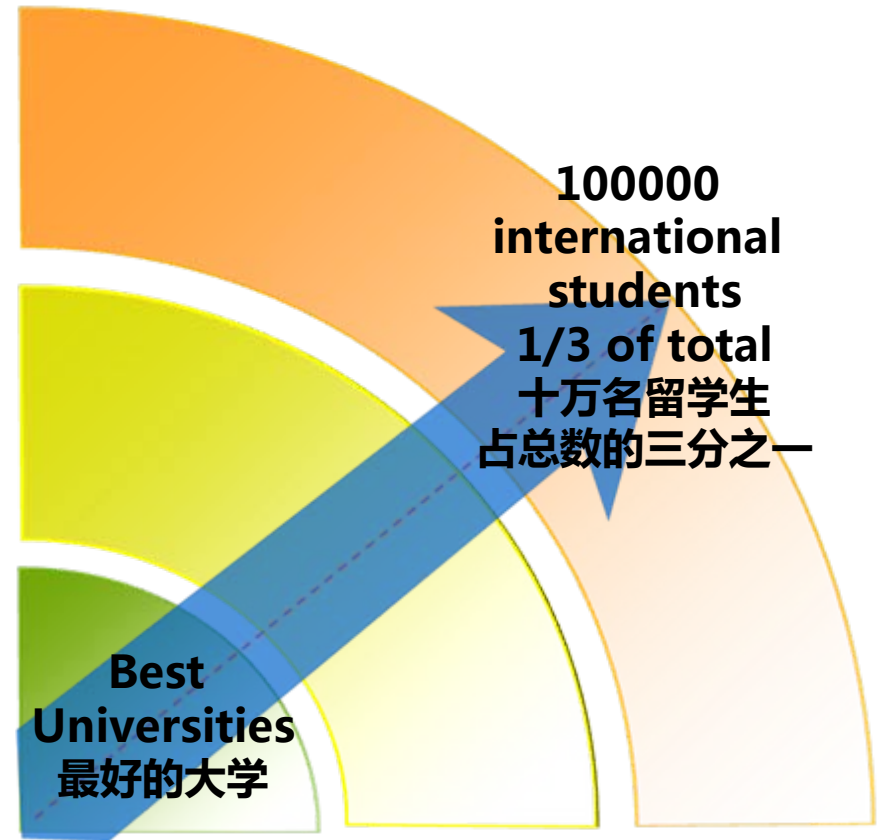
北京是中国的首都，是政治、文化和国际交流的中心

Largest center of research on science and technology.

北京是最大的科学技术研究中心

A wonderful place for quality higher education.
Lower tuition and living costs (compare to U.S, Europe and Australia)

学费和生活成本较低，是接受优质高等教育的理想之地



Beijing's Education for International Students 北京的留学生教育



Chinese Language

汉语

- One of UN official languages.
- 联合国官方语言之一
- Having the most people speaking in the world.
- 世界范围内说汉语的人最多



Standard Chinese Language

标准汉语

- Chinese language: Mandarin
- 汉语：普通话
- Beijing is a best place to learn Mandarin—Standard Chinese!
- 北京是学习普通话的最佳选择
- ——说标准的汉语

What is the most
important of all...
最重要的是... ..



People in Beijing are Very Friendly



北京人民
热情友好





Welcome to Beijing



Why

Beijing Institute of Technology

为什么选择北京理工大学？



One of the Most Important and Successful
Engineering Universities in China

中国最成功的理工大学之一







Early History (1940-1952)

历史

The First Engineering School, Founded in Yan 'an as Academy of Natural Sciences
第一所理工科大学，前身为延安“自然科学学院”



Founder
T. L. Tsu
创办人

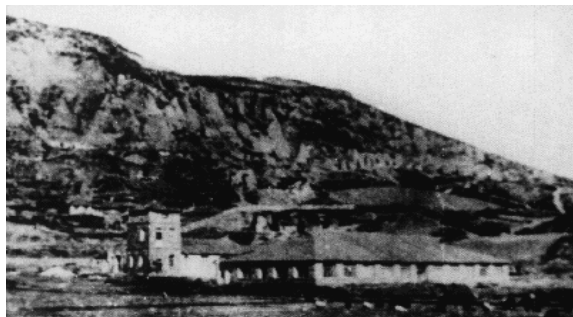
Moved to Beijing
迁入北京

Named as Beijing Institute of Technology (BIT) after merging with the Sino-French University
与中法大学合并后，更名为北京理工大学(BIT)

1940

1949

1952



Milestone events 北理大事记

Approved to be one of the first group of 16 national key universities which were authorized to offer graduate degrees.
首批设立研究生院的16所国家重点高校之一

Changed its Chinese name from "Institute" to "University".
中文名由“学院”更名为“大学”

Admitted to one of the 15 top-tier "Project 211" universities (State Educational Project)
首批进入国家“211工程”的15所高校之一

Admitted to be the 10th university in "Project 985" (State Educational Project)
第十个进入国家“985工程”的高校

1959

1988

1995

2000





To build BIT to be a distinctive world-class university of science and technology.

目标：将北京理工大学建设成为特色鲜明的世界一流理工大学

使命：为社会和经济发展培养创新型人才



To nurture innovative talents

To serve the social and economic development



Location and Campus

位置与校园



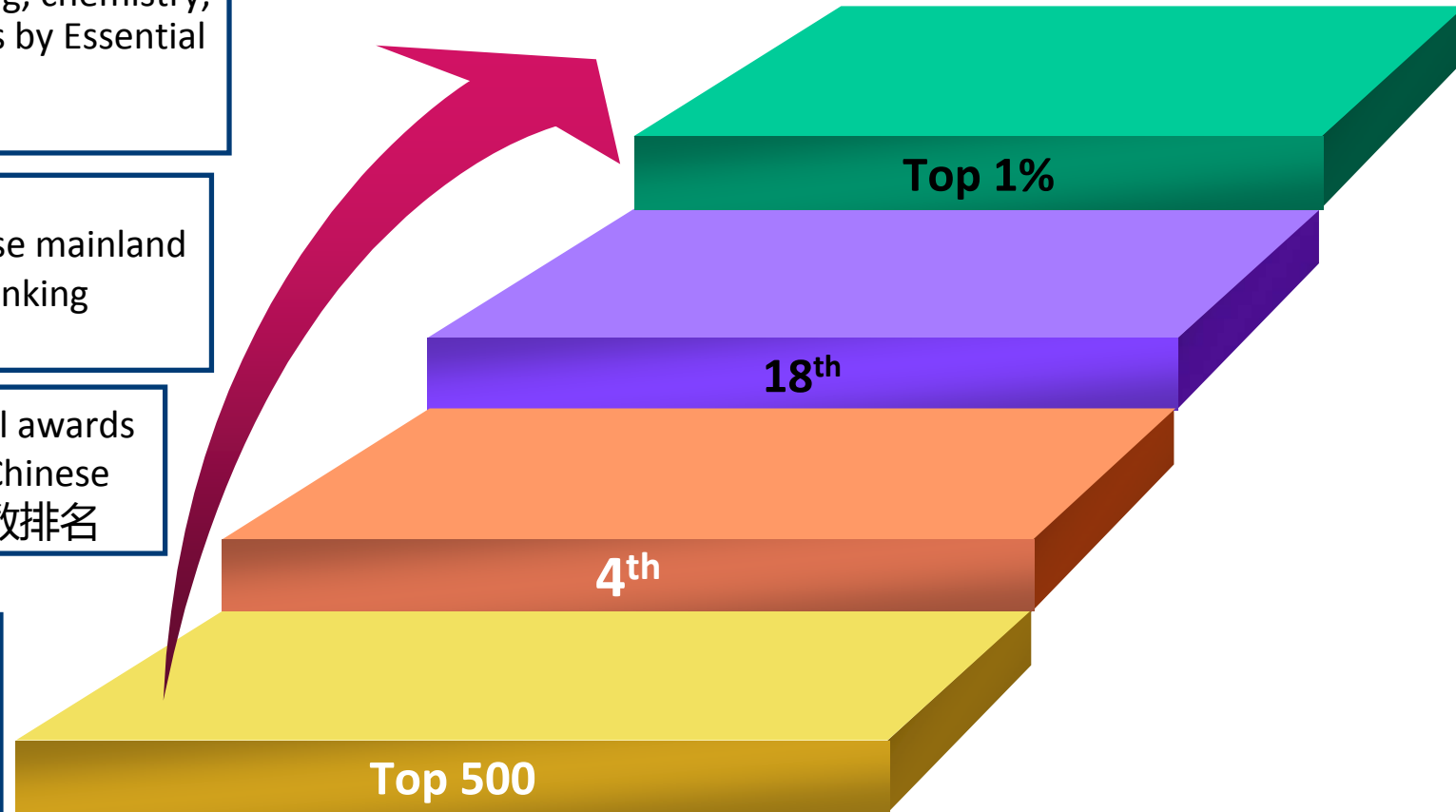
Rankings 学校排名

ESI **Top 1% programs** of engineering, chemistry, material, physics and mathematics by Essential Science Indicator
ESI国际学科排名

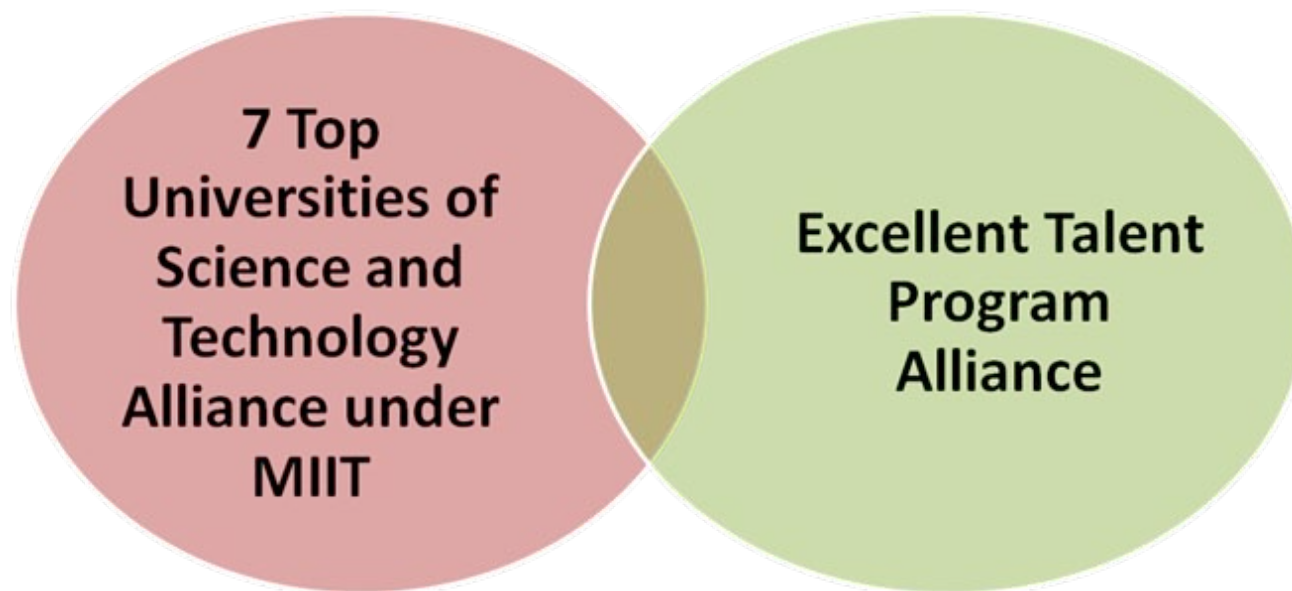
Ranks **18th** in 2011 among the Chinese mainland universities by Shanghai Jiaotong Ranking
中国内地大学排名

Ranks **4th** in the number of national awards in science and technology among Chinese universities
国家级理工奖项获奖数排名

Top 500 universities in the world by "QS World University Rankings 2012/2013"
世界大学排名



Domestic Network 国内平台



工信部下属7所顶级理工高校联盟

九校联盟

- ◆ **Member** --- Alliance of 9 Top Technical Universities in “Project 985”
“985工程”9所理工高校联盟成员
- ◆ **Member** --- Alliance of 7 Top Technical Universities Affiliated under Ministry of Industry and Information Technology (MIIT)

工业和信息化部下属7所理工高校联盟成员



Figures 2012 2012年数据

Students 学生总数	25,885
Undergraduates 本科生	14,110
Masters 硕士生	8,075
Ph.D Candidates 博士生	3,037
International Students 留学生	663
Employees 教职工总数	3,504
Faculty 教师	2,005
Staff 行政人员	1,499



Programs 专业建设

- ◆ 19 postdoctoral programs
博士后流动站19个
- ◆ 26 doctoral programs
博士专业26个
- ◆ 40 master programs
硕士专业40个
- ◆ 64 undergraduate programs
本科专业64个

Laboratories and Institutes 实验室与研究所

- ◆ 4 national key laboratories
国家重点实验室4个
- ◆ 43 research institutes / centers
研究中心 43个



Top Ranking Programs in China

在中国名列前茅的专业

Mechanical Engineering 机械工程

Aerospace Engineering 宇航工程

Applied Mechanics 应用力学

Optoelectronics 光电

Information and Telecommunication 信息与通讯

Automatic Control 自动控制

Material Science and Technology 材料科学与工程

Applied Chemistry 应用化学

Mathematics 数学

Management Engineering 管理工程

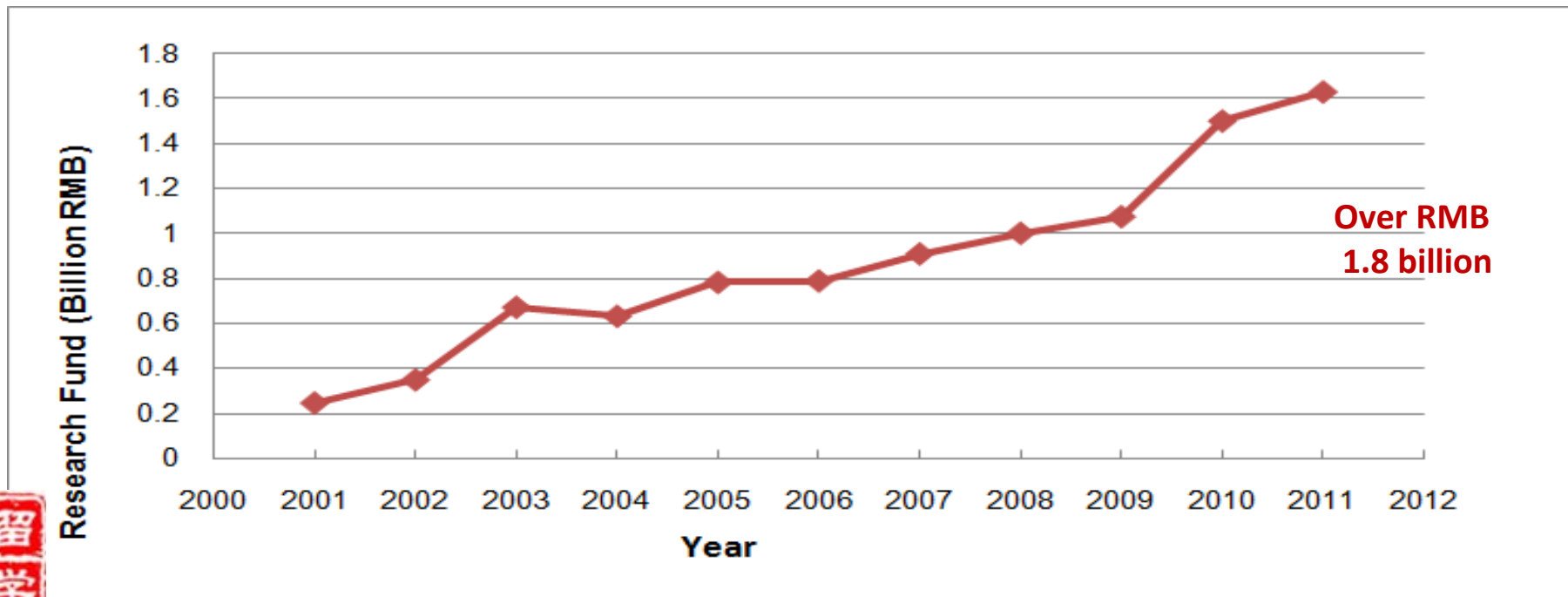
Research Fund 研究经费

Awards 获奖

More than 130 national awards in science and technology in the past 30 years, ranking among Top 10 in China.

Annual Research Funding 年度研究经费
Annual research fund in 2012 amounts to RMB 1.8 billion, Top 10 in China.

Increasing Trend of Annual Research Fund 年度研究经费呈逐年增加趋势



New Technology in Mechanical Engineering

机械工程领域的新技术



Pure Electrical Bus for the Beijing Olympic Games in 2008 and Shanghai World Expo in 2010, in market now. 电动公交车



Ionic coating technology for heating protection, surface hardening, etc. 离子镀膜工艺



Hydrogen internal-combustion engine in various tests 氢燃料内燃机

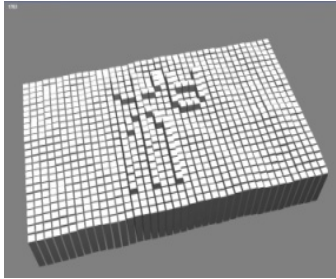


Projects in Software Engineering 软件工程领域

Simulation software was utilized for rehearsing the opening and closing ceremonies of the Olympic Games. 仿真软件，用于2008年的奥运会开闭幕式



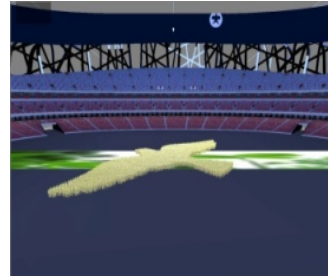
Countdown



Character



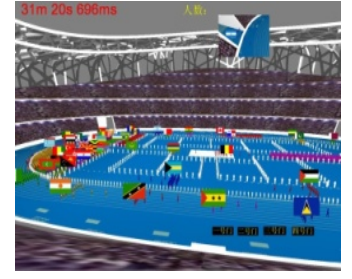
Taiji



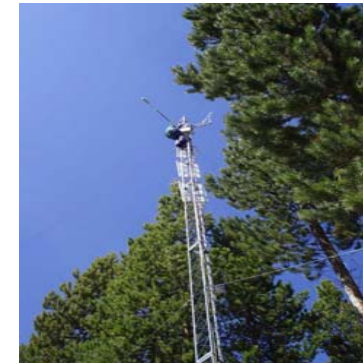
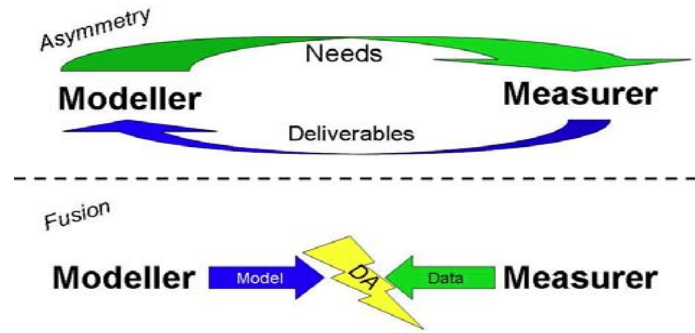
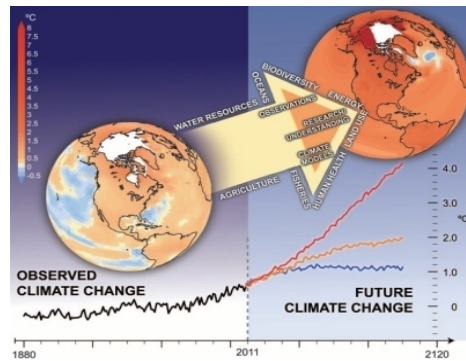
Starlight



Dream



Athletes Parade

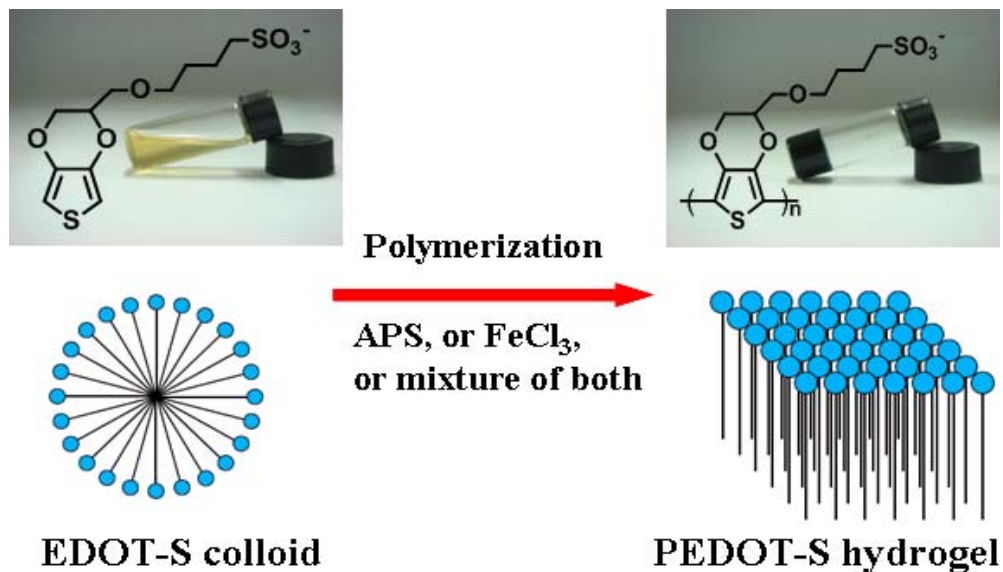


Virtual ecological society aims to identify the true CO2 source and the feasible methods to reduce emissions in real world. 虚拟生态系统，用以减少现实世界中的CO2 排放量

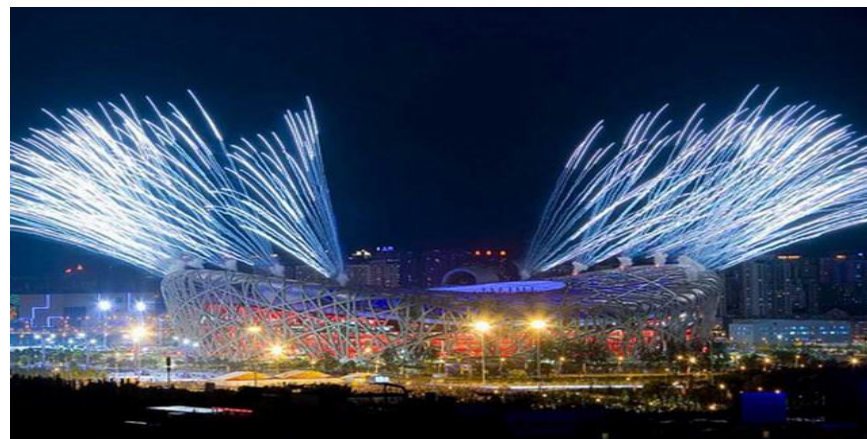


Breakthroughs in Chemical & Environmental Engineering

化学与环境工程领域的突破



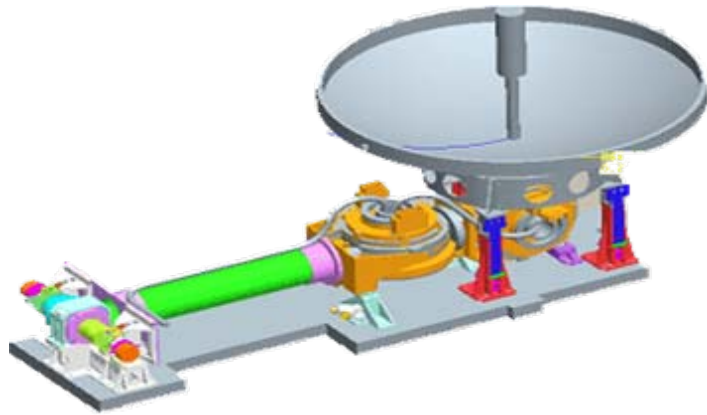
A novel conducting polymer hydro-gel with 2D building blocks indicates promising application to purifying waste water containing organic dyes. **一种新型的传导高聚物水凝胶**



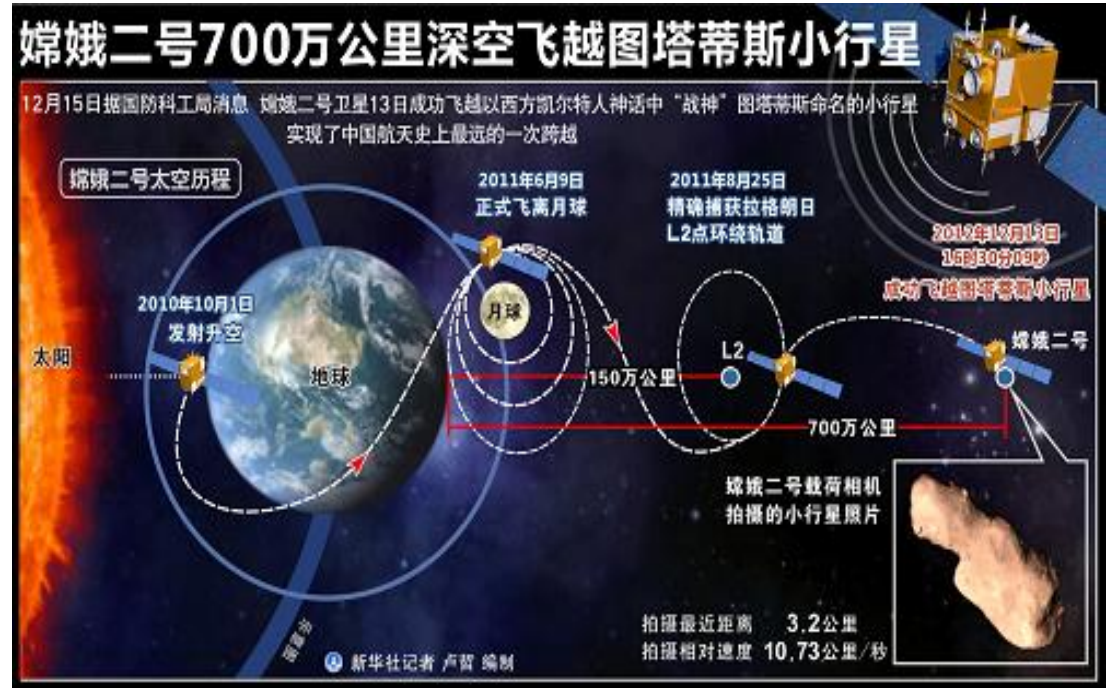
Environmentally friendly firework invented for the opening ceremonies of both Beijing Olympic Games in 2008 and Shanghai World Expo in 2010. **清洁烟花**



High-tech in Aerospace Engineering 航空航天领域的高科技



Deep space exploration: Chang'e II Trajectory for Sun-Earth L2 Lissajous orbit realized in 2011

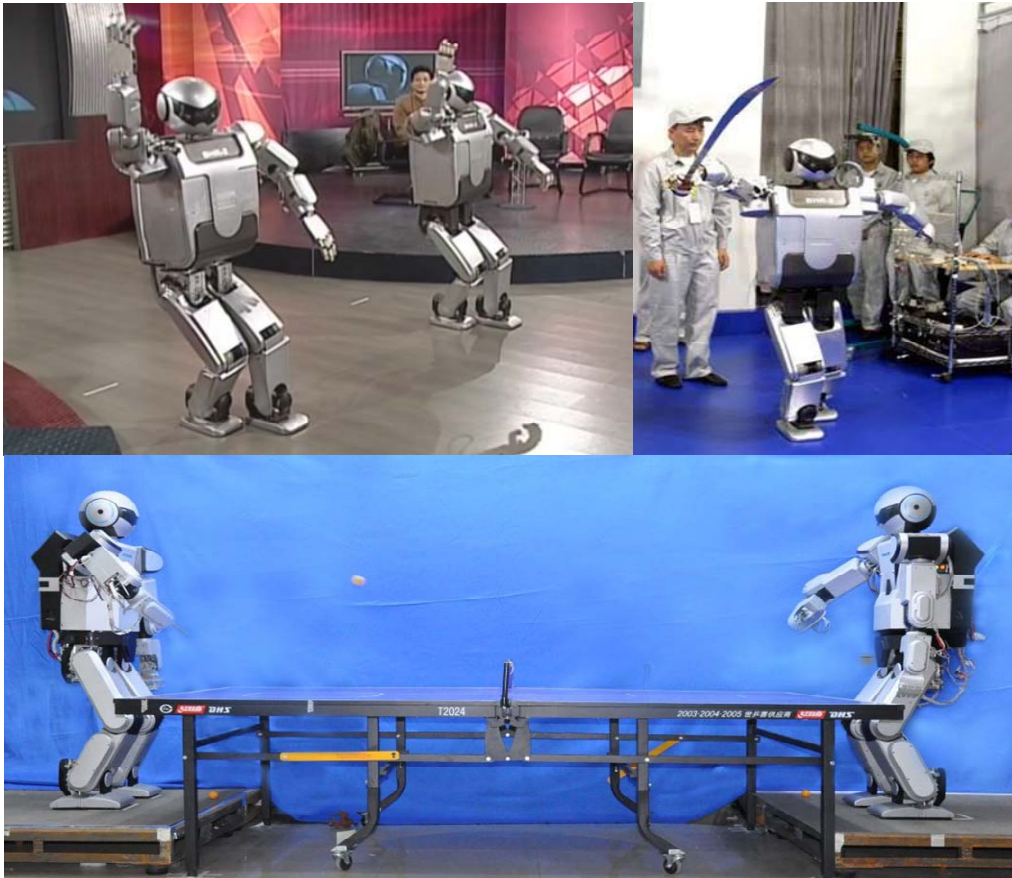


Deep space exploration: Trajectory design for Lunar Orbiter Chang'e II to detect the small planet Toutatis, which is 7,000,000 km away from the Earth in 2012

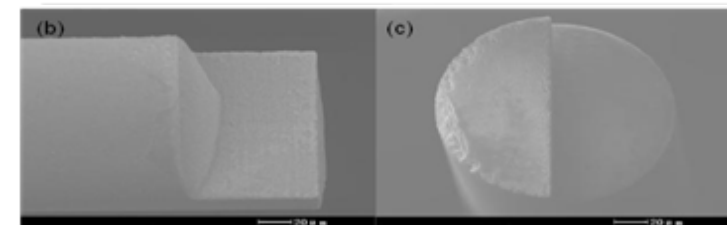
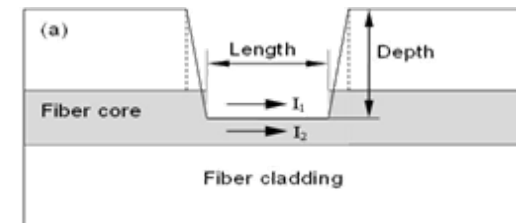
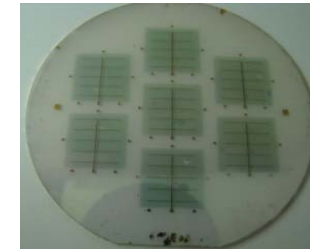


New technology in Mechatronics Engineering

机电工程领域的新技术



Humanoid robots can distinguish high-speed objects, make dynamic balance, and play table tennis with each other.



Laser fabrication: betavoltaic batteries with ultra-high power density and ultra-long lifetime; MZI sensors with ultra-sensitive, high-temperature performance.



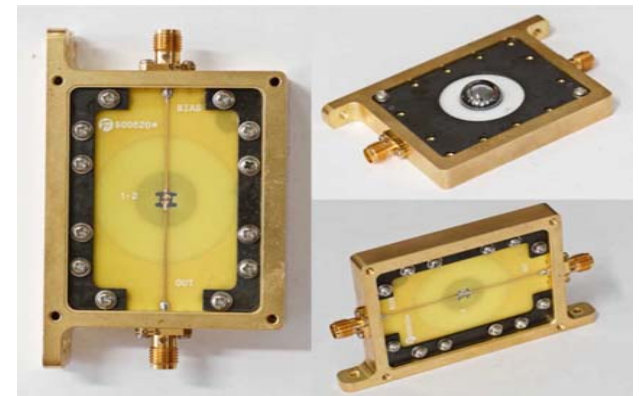
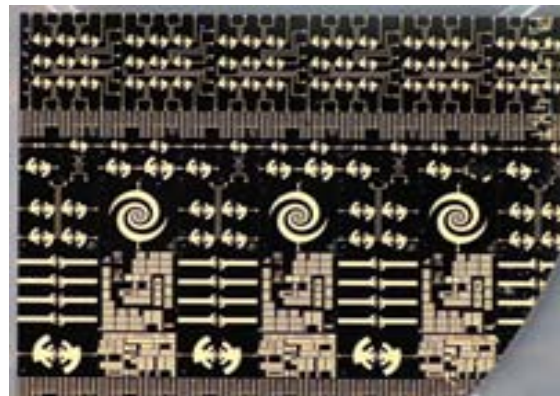
New Breakthrough in Electronics

电子学领域的新突破

Real-time signal processor of microwave radar for Spacecraft Shenzhou VIII unmanned docking with Space Module Tiangong I in October 2011



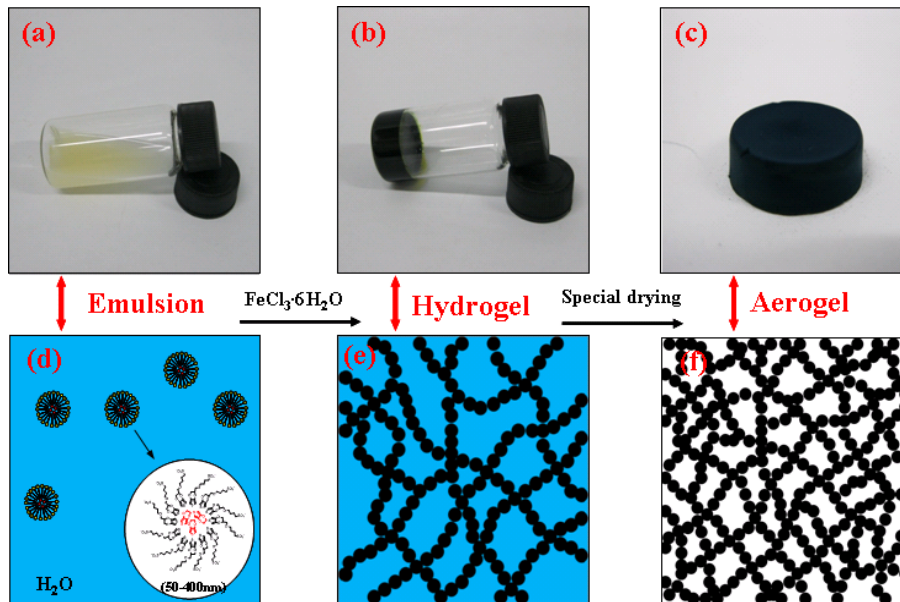
Terahertz technology: monolithic integrated circuit of Schottky diodes and quasi-optical mixer/detector



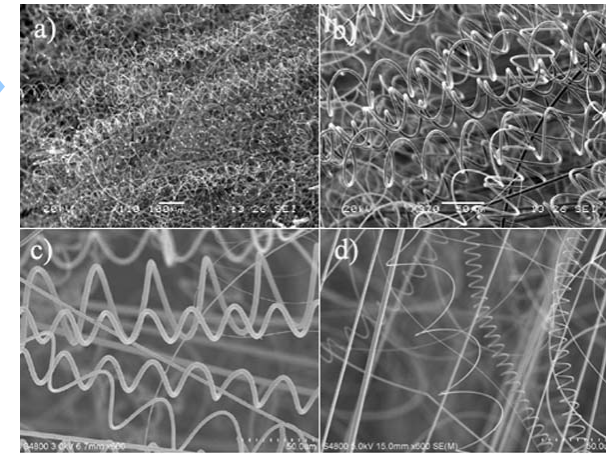
Material science & technology

材料科学

Silicon nitride micro-springs: super-elastic properties very useful in ceramic-based MEMS.



Conducting polymer aero-gels: shows promising applications in absorption and controlled release of some anti-cancer drugs.

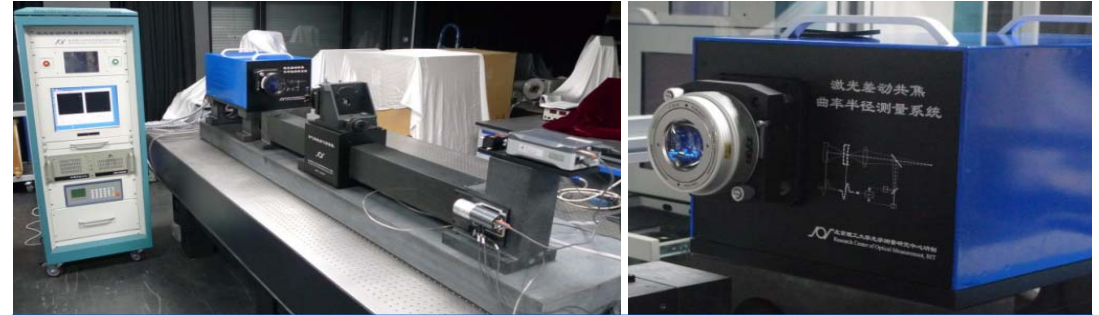
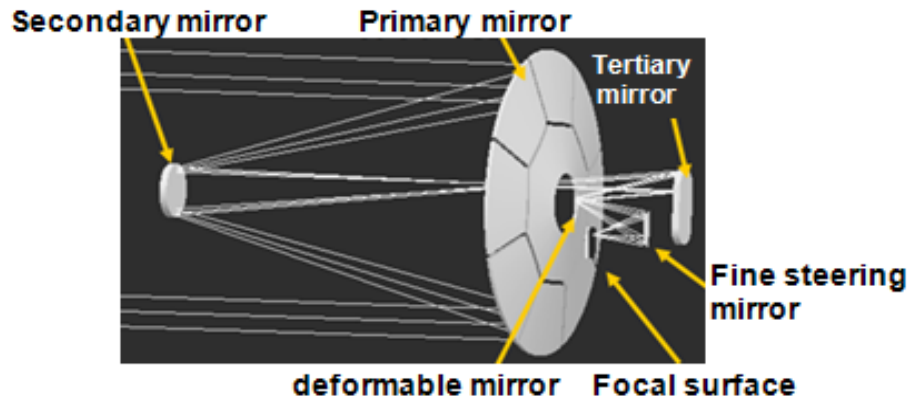


Non-halogen flame retarded polypropylene film of insulation



New Breakthroughs in Optoelectronics

光电子学领域的新突破



Laser differential confocal measurement designed for National Institute of Metrology



Adaptive optics: high resolution imaging for deep space exploration and space laser communication

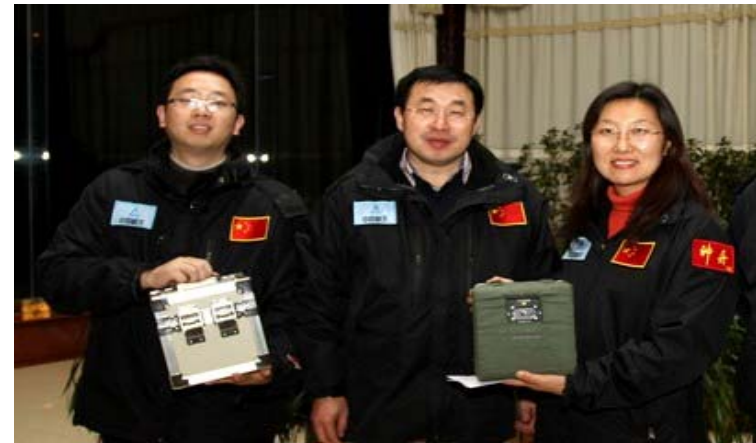


Virtual reality technology enables people to restore the destroyed Yuan-Ming Royal Garden visually.



Moves in Biological & Medical Engineering

生物与医学工程领域的进展



Experiments of human genomes on orbit: micro-fluidic chip device returned from Spacecraft Shenzhou VIII

Exploring the trace of life in space via space biological and biomedical experiments.



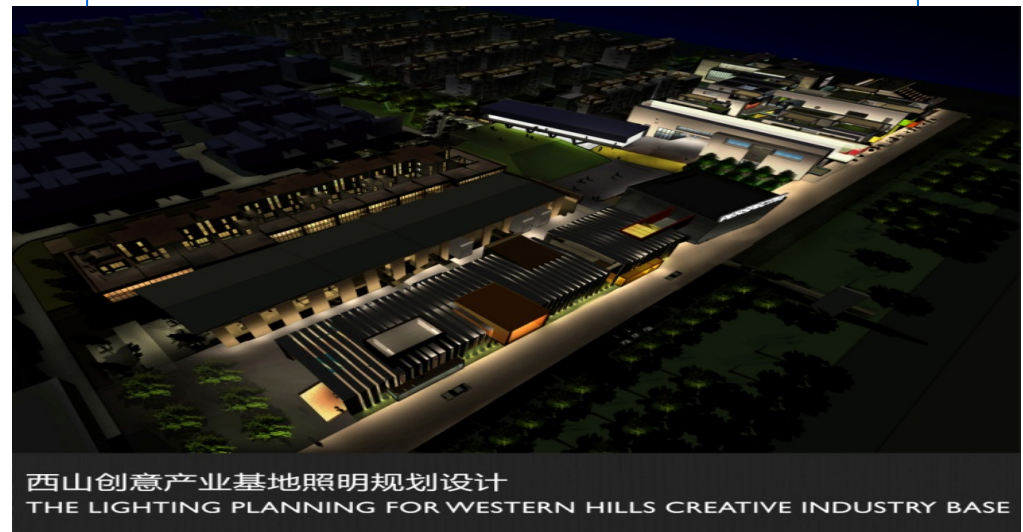
Programs in Design & Arts 设计与艺术领域成果



Ceramics Studio



Digital Interactive Arts



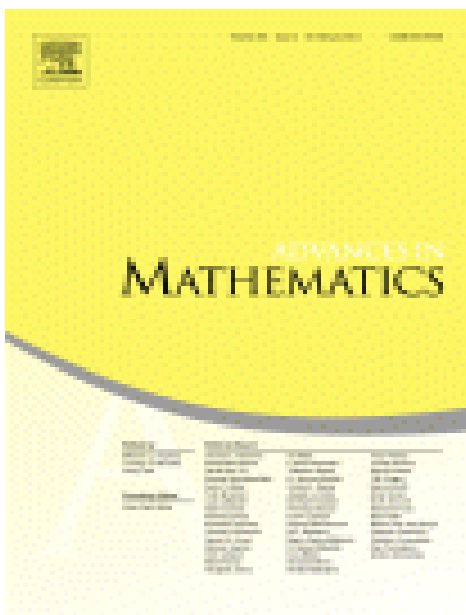
西山创意产业基地照明规划设计
THE LIGHTING PLANNING FOR WESTERN HILLS CREATIVE INDUSTRY BASE

Student design gaining the Silver Award of the 9th China Environmental Art Design School in 2011



Mathematics & statistics 数学与统计

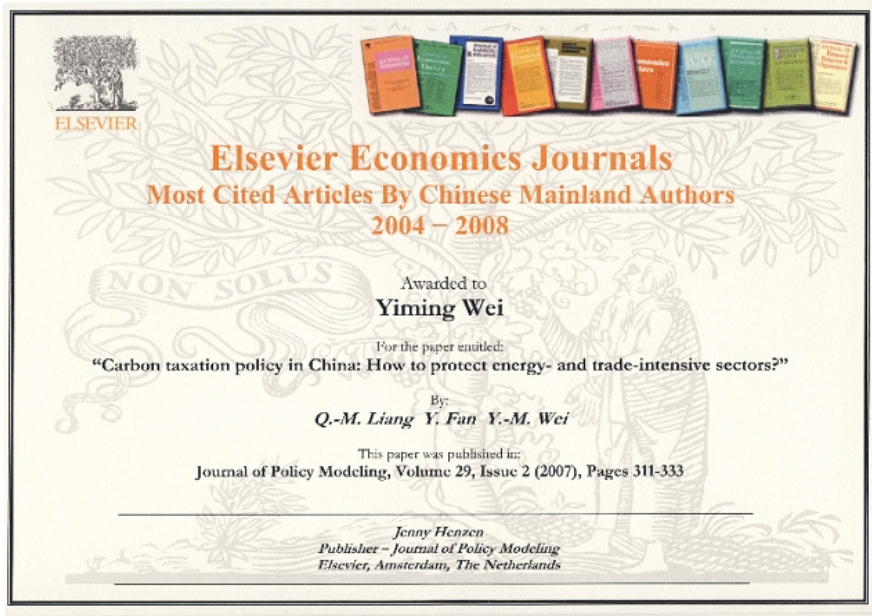
The generalized Dipper-James-Murphy Conjecture claims that for an arbitrary r the set of (Q,e) -restricted multi-partitions gives a labeling of the simple modules over the algebra $H_{r,1,n}$. Prof. Hu Jun proved that the conjecture is true if $e=0$ and for arbitrary e the two notions (i.e., Kleshchev multi-partition and (Q,e) -restricted multi-partition) coincide whenever the multi-partition in question is a multi-core.



The asymptotic behavior of the biharmonic Steklov eigenvalues has been a challenging problem over the past 50 years. Prof. Liu Genqian established a Weyl-type formula to this open problem and showed that if one knows the spectrum of the biharmonic Steklov problem on a bounded domain, then he knows the area of the boundary of the domain.



Economics & administration 经济与管理



Studies on energy policy, such as carbon taxation, received numerous citations all over the world.

Impact study on agriculture policy of biotech plants published at Nature Biotechnology, 2012



[nature.com](#) > [journal home](#) > [current issue](#) > [correspondence](#) > [abstract](#)

ARTICLE PREVIEW
[view full access options](#)

NATURE BIOTECHNOLOGY | CORRESPONDENCE

Silos hamstring Chinese plant biotech sector

Ruifa Hu, Jinyang Cai, Jikun Huang & Xiaobing Wang



Global Partnership 全球合作伙伴

Strategic partnerships with **180** universities from **48** countries and regions

与世界48个国家和地区的180所高校建立战略合作伙伴关系

UCD, NUI (Galway)
University of Manchester
University of Leeds
University of Leicester
University of Reading

RWTH Aachen,
ETH, TU Munich,
KIT, TU Berlin

KTH TKK
University of Torino
Politecnico di Torino

Warsaw University of Technology
"Lucian Blaga" University of Sibiu
Yerevan State University

Moscow State University
Moscow State Technical
University
Belarusian National Technical
University

U of Virginia, SIT
U of Pittsburgh, GaTech,
IIT, Purdue, NCSU,
Marquette University
U of Waterloo, UBC
U of Saskatchewan

Tokyo Institute of
Technology
Waseda University
Konkuk University

Sonora Institute of Technology
Pontifical Catholic University of Chile
Federal University of Paraiba
National University of San Marcos
National University of Cordoba

UPM, UPV, UPC
Polytechnic University of Turin
University of Turin
University of Porto

University of Lagos
University of Pretoria
Menofia University
Kwame Nkrumah University of
Science and Technology

ANU, UWA, UTS
Newcastle, La Trobe
Massey University



International Platforms 国际平台

Universidad Politécnica de Madrid
Universidad Politécnica de Valencia
Universitat Politècnica de Catalunya
Universidad Autonoma de Madrid
Universitat de Barcelona

Spain

The Australian National University
The University of Newcastle
The University of Western Australia
University of Technology, Sydney
La Trobe University
Swinburne University of Technology

Australia

University of British Columbia
University of Waterloo
University of Laval
University of Virginia
University of Pittsburgh
Georgia Institute of Technology
Illinois Institute of Technology
Stevens Institute of Technology
Purdue University
Marquette University

Canada
USA

Moscow State Technical University
Saint-Petersburg State Electrotechnical University
Samara State Aerospace University
Moscow Power Engineering Institute
Mendeleev University of Chemical Technology
Irkutsk State University
Ural Federal University
Belarusian National Technical University

Russia
Belarus

Germany

Africa

Technical University of Munich
RWTH Aachen
Technical University of Berlin
Karlsruher Institute of Technology
Dresden University of Technology
University of Hannover

University of Dar es Salaam
Dar es Salaam Institute of Technology
University of Mauritius
University of Technology, Mauritius



Collaboration with International Enterprises

与国际企业的合作

TOSHIBA



<http://www.ccb.com>



中国建设银行
China Construction Bank



长安汽车



Students Exchange Programs 交换生项目

- ◆ Student exchange agreements with about 50 prestigious universities around the world 与世界50余所优秀高校达成交换生协议
- ◆ 2+2 Program Partners: Australian National University, University of Waterloo, University of Manchester, Missouri University of Science and Technology, Amity University, etc. 2+2合作伙伴项目
- ◆ 100 graduate scholarships from China Scholarship Council annually
- ◆ 中国国家留学基金委每年提供100个奖学金



Students Exchange Programs 交换生项目

Europe 欧洲

University of Aberdeen (2010)
University of Manchester (2010)
UCD(2009)
RWTH (2008)
TU München (2008)
Ecole Polytechnique Universitaire de Tour (2008)
Universidad Politécnica de Valencia (2006)
Karlsruhe TH (2006)
Royal Institute of Technology (KTH) (2005)
Universidad Politécnica de Madrid (2004)
Dresden TU (1998)
Samara State Aerospace University (1990)
TU Berlin (1984)

Australia 澳洲

The University of Western Australia (2008)
The Australian National University (2007)
The University of Newcastle (2007)

Africa 非洲

University of Dar es Salaam
Dar es Salaam Institute of Technology
University of Mauritius
University of Technology, Mauritius

North America 北美

University of Waterloo (2010)
University of Laval (2010)
Missouri S&T (2010)
University of Virginia (2009)
UCSD (2008)
Stevens Institute of Technology (2008)
Mississippi State University (2006)
Purdue University (2005)
Illinois Institute of Technology (2003)
University of Saskatchewan (2005)

Asia 亚洲

The Hong Kong Polytechnic University (2005)
Konkuk University (2008)
Waseda University (2006)
Kobe Design University (2003)
Nagoya Institute of Technology (1997)
Tokyo Institute of Technology (1993)
Chiba Institute of Technology (1990)



WELCOME TO THE OFFICE OF INTERNATIONAL STUDENTS!



来自94个国家的700名留学生在北京理工大学学习

700 International students from 94 countries each year

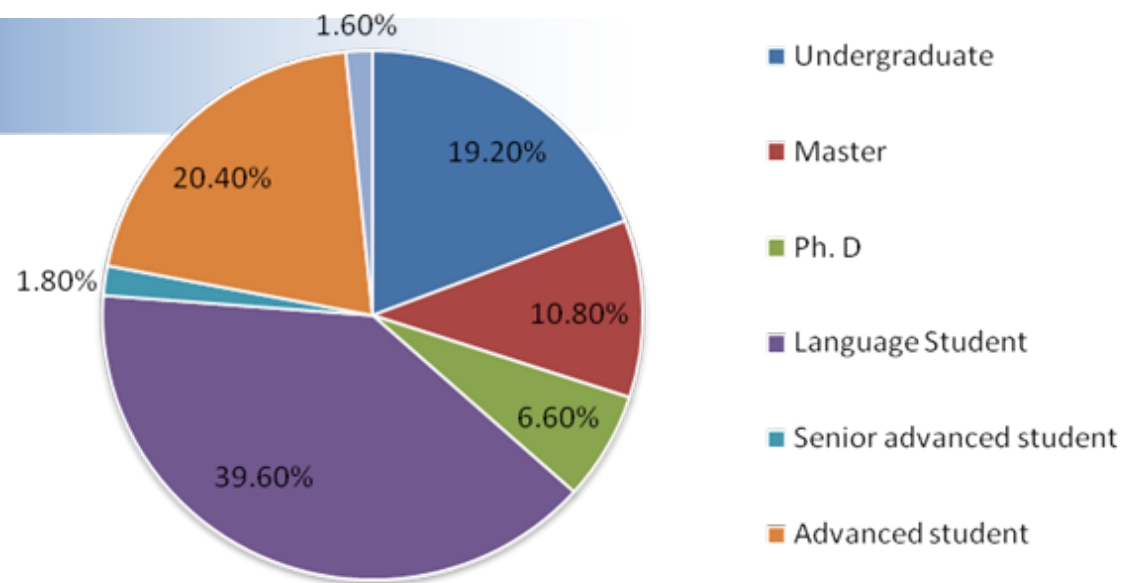
Russia, Korea, Japan, Pakistan, Mongolia, Saudi Arabia, Kazakhstan, Thailand

Rwanda, Algeria, Congo, Angola, Sudan, Tanzania, Kenya, Mauritius

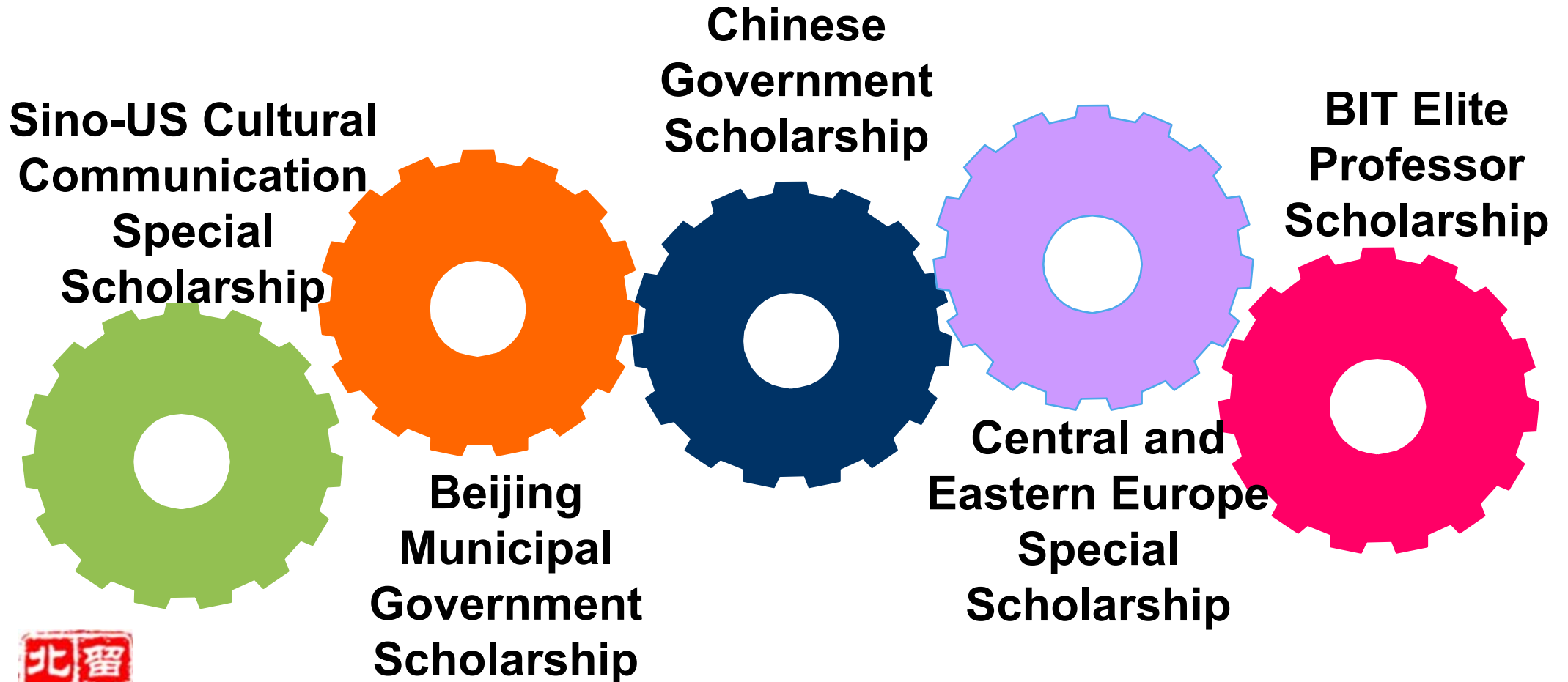
USA, Canada, Mexico, Brazil, Cuba

Germany, Spain, France, Holland, Portugal, Sweden, Bulgaria

Australia



What Scholarship Programs do we have?





Chinese Government Scholarship Program

Who pays for your education?

- The Chinese government
- What does the scholarship cover?
 - Application, tuition, basic learning materials, experiment and internship
 - Accommodation (on campus or off-campus students dorms)
 - One-time settlement subsidy: CNY 1,500 \approx EUR186
 - Comprehensive Medical Insurance
 - Monthly Living allowance: Bachelor students : CNY 1,400 \approx EUR173
Master : CNY 1,700 \approx EUR211
PhD Candidates : CNY 2,000 \approx EUR248
- Application deadline: April 30 / every year





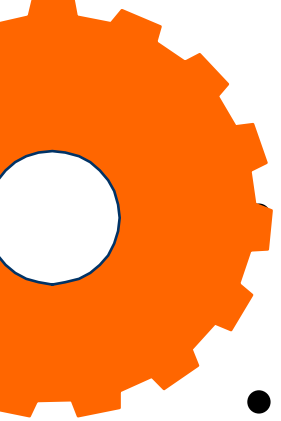
Chinese Government Scholarship Program

- Who can apply?
 - Non-Chinese Citizens
 - The last previous degree is not obtained in China
 - Not been offered this scholarship in the year before application
 - Age:

Categories of Applicants	Duration of Scholarship	Academic Requirement	Age Limit
Master	2-3 academic years	must have a bachelor's degree	under the age of 35
PhD	4 academic years	must have a master's degree	under the age of 40

- How to apply?
 - You can...
 - Register at <http://laihua.csc.edu.cn>, quote BIT's Agency No.is 10007.
 - Send application materials to BIT. (check the <http://isc.bit.edu> for details)
 - You also can...
 - Apply at the Chinese Embassy in your country, and make sure to mark BIT as your first option.





Beijing Municipal Government Scholarship

Who pays for your education?

The Beijing municipal government

- What does the scholarship cover?

Categories of Applicants	You don't have to pay...	Maximal Years of Renewal
Undergraduates	Tuition (CNY 23,000-30,000 /year) (\approx EUR2850-3717)	4 years
Master students	Tuition (CNY 32,000-36,000 /year) (\approx EUR3965-4460)	2.5 years
PhD students	Tuition (CNY 44,400 /year) (\approx EUR5501)	4 years

- Who can apply?
- Non-Chinese Citizens, with qualified previous academic records.
- How to apply?
- Register on the application system at <http://studyatbit.com>.
- Send application materials (check <http://isc.bit.edu> for details) to BIT.





Central and Eastern Europe Special Scholarship Program

- Overview

The special scholarship program lasts from 2013 to 2017, and offers 1000 scholarships for Central and Eastern Europe countries applicants.

- Who pays for your education?

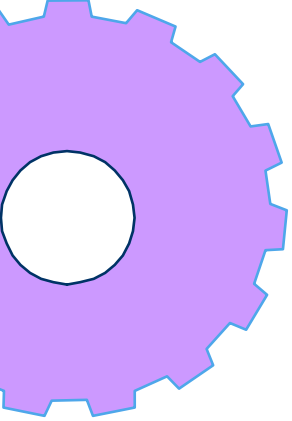
The Chinese government

- What does the scholarship cover?

- Application, tuition, basic learning materials, experiment and internship
- Accommodation on-campus (on campus or off-campus students dorms)
- One-time settlement subsidy CNY 1,500 \approx EUR186
- Comprehensive Medical Insurance
- Monthly living allowance of CNY 1,700 \approx EUR211



(Note: The full scholarship can be divided into several shorter terms for more than one student)



Central and Eastern Europe Special Scholarship Program

- Who can apply?

- Countries: Albania, Bulgaria, Bosnia and Herzegovina, Croatia, Czech, Estonia, Hungary, Greek, Latvia, Lithuania, Macedonia, Montenegro, Poland, Romania, Serbia, Slovakia, Slovenia, Turkey.
- More than 6 month study period
- The student's home university must recognize the credits that the students earned in the Chinese universities

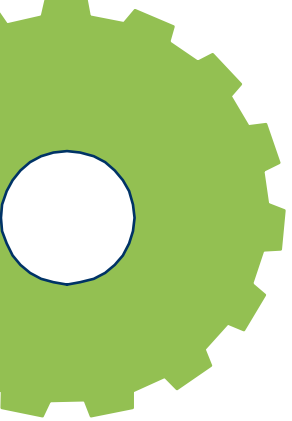
- Application deadline: May 31 of each year

(Note: The application deadline may change from year to year, please check BIT's yearly Admission Book for updated information.)

- How to apply?

- Register on the application system at <http://www.studyatbit.com>.
- Send the application materials to BIT (check <http://isc.bit.edu> for details).

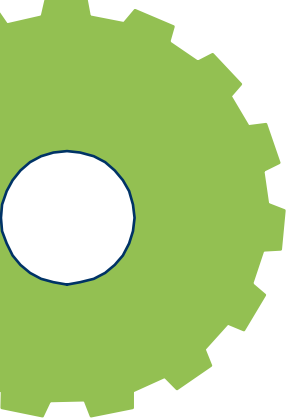




Sino-US Cultural Communication Special Scholarship

- Who pays for your education?
The Chinese government
- What does the scholarship cover?
 - Application, tuition, basic learning materials, experiment and internship
 - Accommodation (on campus or off-campus students dorms)
 - One-time settlement subsidy: CNY 1,500 \approx EUR186
 - Comprehensive Medical Insurance
 - Monthly Living allowance:
 - Bachelor students : CNY 1,400 \approx EUR173
 - Master : CNY 1,700 \approx EUR211
 - PhD Candidates : CNY 2,000 \approx EUR248
- Application deadline: April 30 / every year





Sino-US Cultural Communication Special Scholarship

- Who can apply?

- US citizens
- The last previous degree is not obtained in China
- Not been offered this scholarship in the year before the application
- Age

Categories of Applicants	Duration of Scholarship	Academic Requirement	Age Limit
Master	2-3 academic years	must have a bachelor's degree	under the age of 35
PhD	4 academic years	must have a master's degree	under the age of 40

- How to apply?

- You can...

- Register at <http://laihua.csc.edu.cn>, quote BIT's Agency No.is 10007.
- Send application materials to BIT. (check the <http://isc.bit.edu> for details)

- You also can...

- Apply at the Chinese Embassy in your country, and make sure to mark BIT as your first option.





BIT Elite PhD Advisor Scholarship

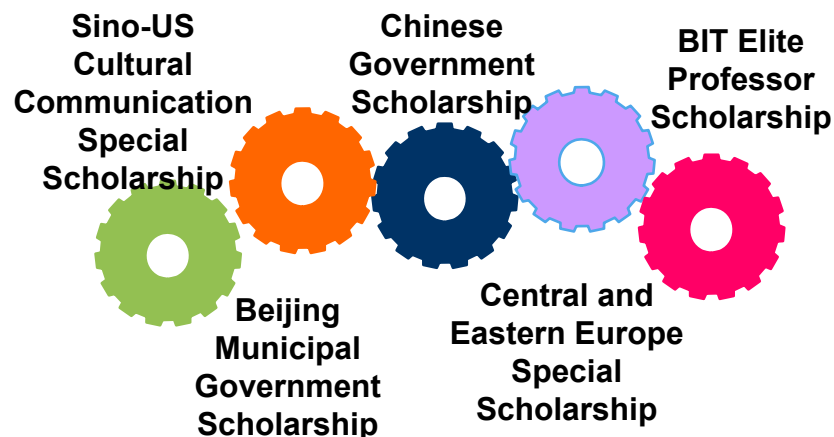
- Who are the Elite Phd Advisors?
 - The academicians of Chinese Academy of Engineering and Chinese Academy of Sciences who based in BIT.
 - Prestigious professors with outstanding academic and research achievement.
- Who can apply?
 - Students with excellent academic records.
- Position for 2014
 - 10-15, number varies each year depending on the number of selected advisors
- Age
 - No age limit



If you wish to be self-funded, the tuition for the programs is:

Undergraduate	Graduate	PhD	Language	Short programs
<p>Programs in Chinese: CYN 23,600 /year (≈EUR2,924)</p>	<p>Programs in Chinese: CYN 32,600 /year (≈EUR4,039)</p>	<p>CYN45,000 /year (≈EUR5,575)</p>	<p>Language & Culture: CYN8,500 /semester (≈EUR1,053)</p>	<p>EUR30-50/day (Including tuition, accommodation, insurance, field trips to the Forbidden City, Summer Palace, Great Wall, etc.)</p>
<p>Programs in English: CYN 30,600 /year (≈EUR3,791)</p>	<p>Programs in English: CYN 36,600 /year (≈EUR4,534)</p>		<p>Preparatory Course: CYN 10,300 / semester (≈EUR1,276)</p>	
	<p>MBA in English: CYN39,600/year (≈EUR4,906)</p>			

Address for application materials to BIT:



Contact:

Ms. Zhu Weihua, Office 109B
or Ms. Chen Hui, Office 109C

wzhu@bit.edu.cn
chenhui410@gmail.com

Address: Office of Graduate Study, Office of International Students, Beijing Institute of Technology, No.5 South Zhong Guan Cun Street, Haidian District, Beijing, P. R. China 100081

Office Phone: +86 10 68918120 Mobile : +86 136 9113 4909 Fax: +86 10 68914846

Email: isc@bit.edu.cn

For more information: <http://isc.bit.edu>



PhD Programs 博士专业

Aerospace Engineering 航空航天工程

Mechatronics Engineering 机电工程

Mechanical Engineering 机械工程

Optoelectronics 光电子学

Information and Electronics 信息与电子

Automation 自动化

Computer Science and Technology 计算机科学与工程

Material Science and Engineering 材料科学与工程

Chemical Engineering and Environment 化学工程与环境

Life Science 生命科学

Mathematics 数学

Physics 物理

Chemistry 化学

Management and Economics 经济与管理

Institute of Education 教育



Master Programs 硕士专业

Aerospace Engineering

Mechatronics Engineering

Mechanical Engineering

Optoelectronics

Information and Electronics

Automation

Computer Science and Technology

Software

Material Science and Engineering

Chemical Engineering and Environment

Life Science

Mathematics

Physics

Chemistry

Management and Economics

Humanities and Social Sciences

Law

Foreign Languages

Design and Arts

Education



Master Programs Taught in English
英文授课的硕士课程

Mechanics
力学

Mechanical Engineering
机械工程

Safety Science and Engineering
安全科学与工程

Software Engineering
软件工程

Computer Science and Technology
计算机科学与工程

MBA

**Electronics and
Communication Engineering**
电子与通信工程

**Control Science and
Technology**
控制科学与技术



Undergraduate Programs 本科生专业

Aerospace Engineering

Mechatronics Engineering

Mechanical Engineering

Optoelectronics

Information and Electronics

Automation

Computer Science and Technology

Software

Material Science and Engineering

Chemical Engineering and Environment

Life Science

Sciences

Management and Economics

Humanities & Social Science

Law

Foreign Languages

Design and Arts



Undergraduate Programs Taught in English
英语授课的本科生课程

Flight Vehicle Design and Engineering
飞行器设计与工程

Mechanical Engineering
机械工程

International Economics and Trade
国际经济与贸易

Intelligent Mechatronic Engineering
智能机电工程

Electrical Engineering
电气工程

Software Engineering
软件工程

Electronic Science and Technology
电子科学与技术

Computer Science and Technology
计算机科学与技术



Pre-university Program 大学预科课程

Courses: language proficiency, physics, math., chemistry, biology and computer knowledge.

课程设置：语言能力培养、物理、数学、化学、生物、计算机

Open to: overseas students who prepare for higher degree study in a Chinese university.

面向：准备接受中国高等教育的海外留学生



Chinese language and culture program

汉语和文化项目

8 Levels (8个级别): from elementary, intermediate to advanced.

Tailored course designed to meet specific needs for different groups of students. 定制课程满足多样化需求





Short-term Summer & Winter Programs

夏季与冬季短期项目

One or two-month cultural and engineering research program:

一到两个月的文化和工程研究项目

Help students to intensify their understanding on China's economy and society.

Improve their Chinese language levels.

Practical communication skills.

Four weeks of intensive Chinese language and culture study on campus, and weekend off-campus tours to some of China's most important historic and scenic spots.





Field trips in
Beijing
北京旅行

culture lectures
文化课程

Tours to other cities
其他城市之旅

Student
Activities
学生活动



Arts and Sports competitions
艺术和体育竞赛



Performances
文艺演出



Wonderful campus life 精彩的校园生活



International Student's Dorm

留学生公寓



Room: Apartment, three or two double bedrooms ,share one living room, shower and restroom.

Air-conditioner, TV , phone, bookshelf, desk, wardrobe, internet access.





**Public Kitchen
on each floor**
每层楼的公共厨房

Laundry room
洗衣房





Living on BIT campus 生活在北京理工大学









北留
理學

德以明理 学以精工



ຂໍຂອບໃຈທ່ານ
შეწონა

danke u

teşekkür ederim

감사합니다

شكرا لك

б л а г о д а
р я

谢谢!

grazie

terima kasih

tak

köszönöm

teşekkür ederim !

σ α ς ε υ χ α ρ ι σ τ ώ

dëkuji

σας ευχαριστώ

ありがとう

Thank you !

aitäh

დიდი მადლობა

Danke

धन्यवाद

ଧନ୍ୟ

di ou mèsi



dëkuje

MERCI !

takk



THANKS!

For more information, please contact us:

Beijing Institute of Technology

The Office of International Students

5 South Zhong Guan Cun Street, Hai Dian District, 10081, Beijing, PRC.

Tel: +86-13520186272

Fax: +86-10-68914846

E-mail: isc@bit.edu.cn

Website: www.bit.edu.cn <http://isc.bit.edu.cn>

